



Permit Type	Feb-10	Feb-09	Feb-08
Single-Family Residence	6	15	26
Multi-Family Residence			
New Commercial			3
Site Work Only		1	
School			
Certificate of Occupancy	3	1	
Demolition			1
Electrical/Mechanical/Plumbing	1		
Irrigation/WaterSoft/Pool	4	4	12
Accessory Building/Misc		5	2
Deck/Patio		1	1
Remodel/FinishOut -Commercial	1	2	
Remodel-Residence			2
Signs	4	15	4
TOTALS	19	44	51

2010 YTD	2009 YTD	2008 YTD
26	33	81
		5
	2	
4	1	
		1
3	1	
4	9	22
	9	3
2	2	1
1	5	3
		4
13	30	9
53	92	129

BUILDING VALUATION	Feb-10	Feb-09	Feb-08
Single-Family Valuation	\$848,992.85	\$2,260,581.00	\$2,575,272.00
New Commercial Valuation	\$0.00	\$0.00	\$0.00

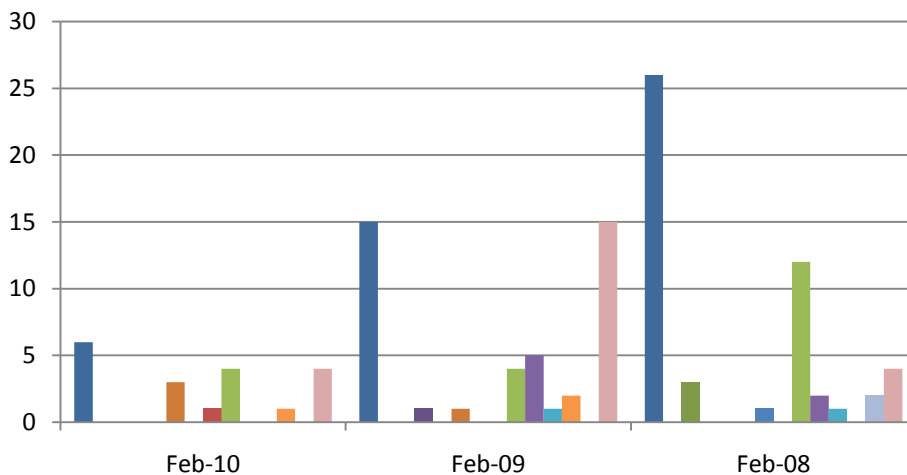
2010 YTD	2009 YTD	2008 YTD
\$3,726,519.72	\$3,918,243.00	\$6,232,565.00
\$0.00	\$0.00	\$3,700,000.00

UTILITY CONNECTIONS	Feb-10	Feb-09	Feb-08
Water Connection- Residential	3	8	14
Water Connection - Commercial			
Wastewater - Residential	6	15	26
Wastewater- Commercial			

2010 YTD	2009 YTD	2008 YTD
17	9	30
		4
26	44	83
		3

SERVICE UNITS	Feb-10	Feb-09	Feb-08
Water Service Units	3	8	46
Wastewater Service Units	6	15	24

2010 YTD	2009 YTD	2008 YTD
17	9	48
26	44	107



- Single-Family Residence
- Multi-Family Residence
- New Commercial
- Site Work Only
- School
- Certificate of Occupancy
- Demolition
- Electrical/Mechanical/Plumbing
- Irrigation/WaterSoft/Pool
- Accessory Building/Misc
- Deck/Patio
- Remodel/FinishOut -Commercial
- Remodel-Residence
- Signs